

Key Themes from the Thematic Analysis of the CINNTE Review Reports of Independent and Private HEIs

[thematic-analysis-of-the-cinnte-review-reports-of-independent-and-private-heis.pdf](#)





CINNTE reviews of private & independent HEIs

- 2024 - CINNTE reviews extended to include independent and private HEIs
- Terms of reference and handbook devised
- Reviews of the four large private and independent HEIs completed - review reports published
- Reviews evaluate institution-wide QA
- Thematic analysis conducted on these four reports



Dearbhú Cáilíochta
agus Cáilíochtaí Éireann
Quality and
Qualifications Ireland



Thematic Analysis

- Describes and analyses general findings across a process/sector.
- Identifies common themes.
- Shows developments, trends and areas of good practice.
- Contributes to improvements at institutional and sectoral level, national and international contexts.



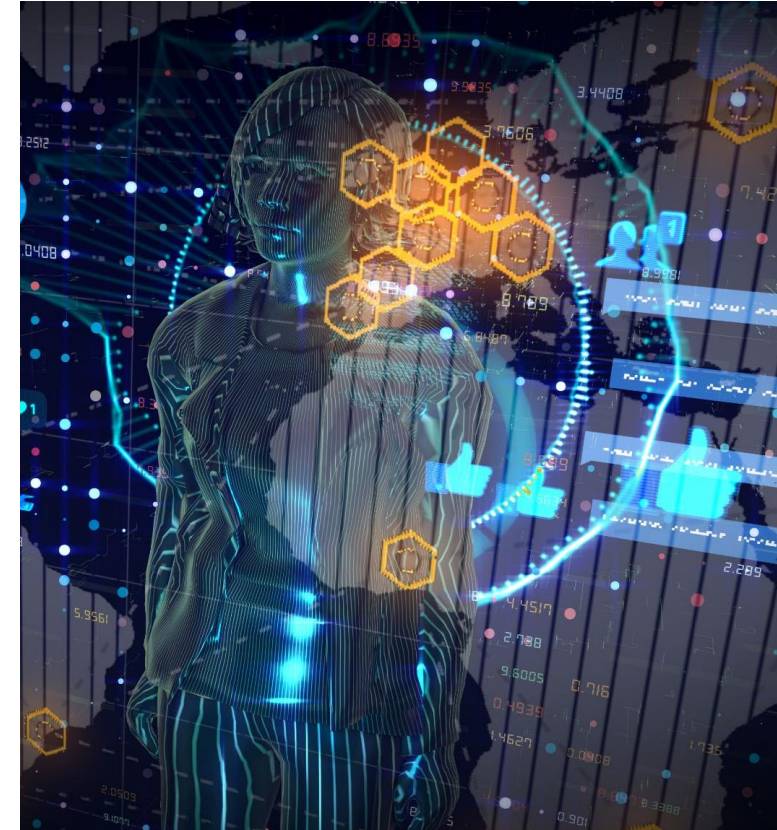
GenAI & manual analysis

Combined Approach: GenAI and manual methods used to identify key themes.

MS Copilot acted as a research assistant.

Independent Review Process: Two staff members conducted independent thematic analysis.

Theme verification: Final themes verified through discussion and collaboration.



Dearbhú Cáilíochta
agus Cáilíochtaí Éireann
Quality and
Qualifications Ireland



Key Themes

- Methodologies for ISER
- Governance and Management of QA
- Teaching, Learning and Assessment
- Self-Evaluation, Monitoring and Review



Methodologies for the ISER - Key Themes

- Stakeholder engagement in ISER development.
- Data collection, analysis, and case studies.
- Reflective, evaluative approaches and alignment with strategic goals.
- Identification of key areas for improvement in ISERs.





Stakeholder engagement in ISER development

- Inclusive Stakeholder Engagement with diverse ISER working groups formed.
- Wide ranging consultations provided valuable insights.
- Variations in level of engagement, review teams suggested adding external examiners and employers.
- Concern about lack of student representatives on some groups, despite student involvement in the process.



Data collection, analysis and case studies

- **Diverse Data Collection** - Institutions used quantitative and qualitative data (surveys, feedback, KPIs).
- **Case Studies and Peer Reviews** - Good practices and areas for improvement.
- **Shared Data Analysis** - Fostered stakeholder engagement.
- **Areas for Improvement** - Incorporating metrics, enhancing student participation.





Reflective, evaluative approaches and alignment with strategic goals

- **Commitment to critical reflection** and continuous improvement.
- **Alignment with Strategic Goals** - focus on key quality and development areas.
- **Need to enhance Data-Driven QA** - systematic, data-driven monitoring.
- **Strategic Workforce Planning** –need to develop workforce plans to support growth and clarify roles.





Identification of key areas for improvement in ISERs

- **Enhance Student Support Services** - foster academic success and wellbeing.
- **Improve Assessment and Feedback methods** - better support learning outcomes.
- **Strengthen QA Governance** – more effective institutional quality assurance.





Governance and Management Themes

- Clear governance structures with oversight teams.
- Centralised and updated QA policies.
- Commitment to quality and inclusivity through staff development.
- Ensuring academic integrity with policies & procedures, external examiners, guidelines for research and use of GenAI.



Governance and Management: Areas for Improvement

- Simplify QA Governance Structures.
- Enhanced Learner Engagement in QA Governance Forums.
- Integrate strategic planning and improve communication.
- Develop strategic workforce plans and data-driven monitoring supports.



Teaching, Learning and Assessment (TLA) Themes

- **Quality and Flexibility:** HEIs are ensuring high-quality teaching through expert-led programme design, flexible delivery and continuous monitoring, supported by staff development.
- **Learning Environment:** HEIs are enhancing student learning via strategic infrastructure investment, expanding flexible delivery modes and updating QA processes to ensure equity and inclusion.





Teaching, Learning and Assessment (TLA) Themes

- **Assessment and Academic integrity(AI):** HEIs are enhancing AI through updated assessment policies and practices, while continuing to strengthen consistency of information communicated with stakeholders.





Teaching, Learning and Assessment (TLA) Themes

- **Learner Support Services:** HEIs offer comprehensive support services—including digital hubs, libraries, and tailored international student assistance—while being encouraged to enhance data monitoring and accessibility to better serve diverse student needs.





TLA: Areas for Improvement

Assessment Clarity: Improve accessibility and consistency of assessment information for students.

Monitoring Frameworks: Strengthen systems for benchmarking and analysing student results.

Academic Integrity: Update policies to address emerging challenges in academic integrity, such as the use of GenAI.



Dearbhú Cáilíochta
agus Cáilíochtaí Éireann
Quality and
Qualifications Ireland



TLA: Areas for Improvement

Work-Integrated Learning: Expand accredited placements to enhance employability and practical experience for students.

Student Partnership: Embedding a 'students as partners' approach to ensure meaningful student participation in self-evaluation, monitoring, and governance processes.



Dearbhú Cáilíochta
agus Cáilíochtaí Éireann
Quality and
Qualifications Ireland

Self-Evaluation, Monitoring & Review: Key Themes

Structured Review Cycles: regular programme reviews undertaken using diverse monitoring mechanisms.

Integrated Monitoring: Multi-layered approaches combine internal audits, external evaluations & stakeholder feedback.

Inclusive Engagement with stakeholders ensuring diverse perspectives in self-evaluation.

Collaborative Practices: Advisory groups and inclusive consultations commonly used.



Areas identified for improvement

- **Stakeholder Engagement Practices:** Continue to involve diverse stakeholders in self-evaluation.
- **Enhance Stakeholder Input:** Enhance input from external examiners, employers, and placement providers.
- **Data-Driven Decision Making:** Strengthen internal QA and enhance data driven decision making.
- **Clear Quality Indicators:** Develop measurable indicators to provide insights for management and staff decision-making.

