

Digital Transformation Impacting Programme Delivery at CCT College Dublin





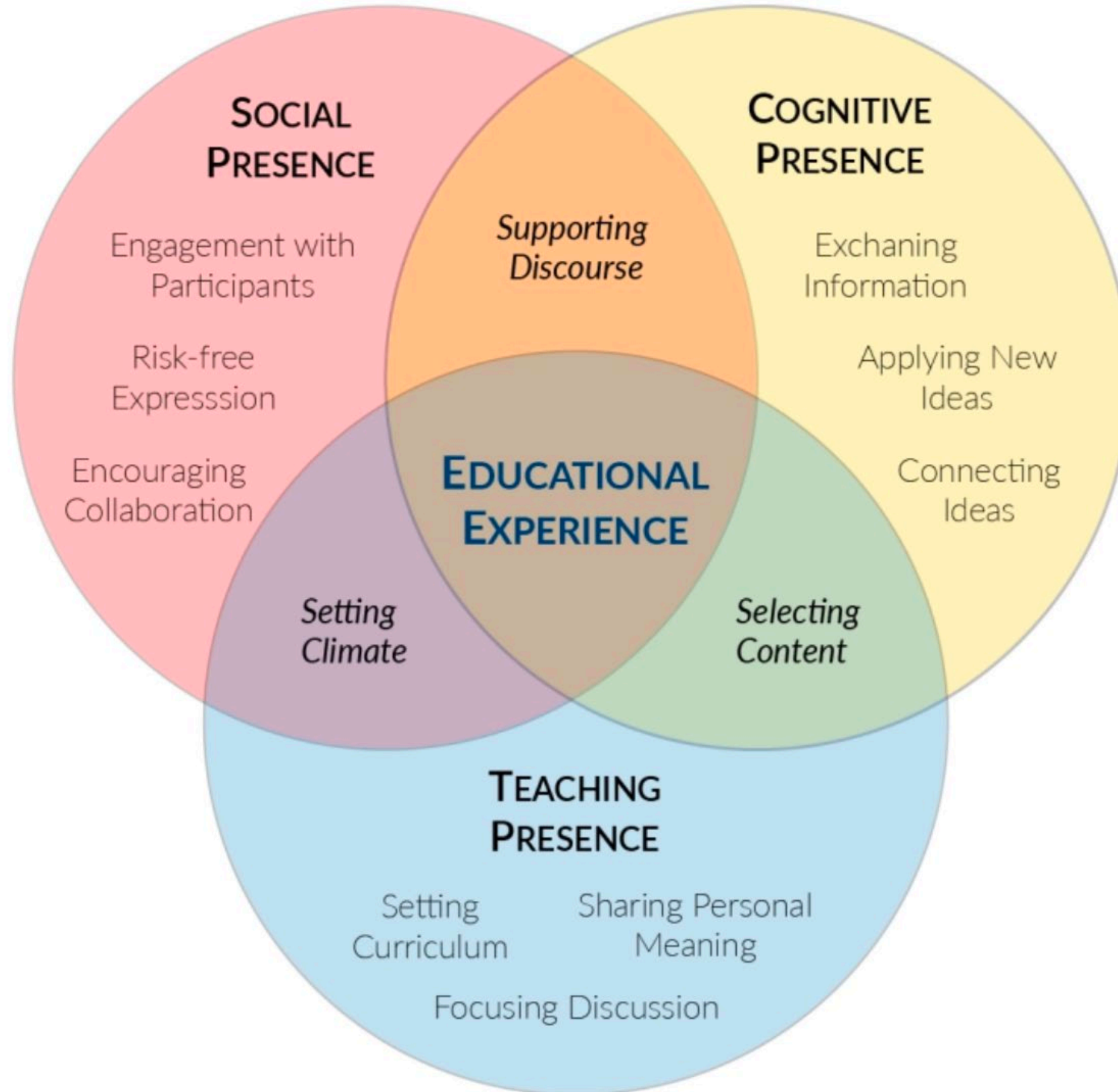




Just
do it!

‘a strong focus on digital innovation to enhance the teaching and learning experience.’

The Community of Inquiry Model



what did we do?



padlet

 Alan Foran + 2 • 3mo

Our SWOT padlet

Made with a stroke of genius

Strengths

One of the pioneers on eletrical cars.

There is a lot of expertise acquired with time and a huge amount of information about processes.

★★★★★ (3) Rate

Innovation

★★★★★ (3) Rate

Value of company - Large

★★★★★ (3) Rate

Investment in tech

★★★★★ (3) Rate

Brand

★★★★ (3) Rate

Revolutionary ideas

★★★★ (3) Rate

Weaknesses

Lack of management

Delay to delivery products on time can send a bad signal to the market.

★★★★★ (3) Rate

Unreliable

★★★★★ (3) Rate

Not meeting demand

★★★★★ (3) Rate

Elon Musk activities

★★★★★ (3) Rate

Risk on production

Distribution delays

★★★★★ (3) Rate

Not making profit/burning cash

★★★★★ (3) Rate

Opportunities

Explore and lauch in new markets

★★★★★ (3) Rate

Battery tech into homes

★★★★★ (3) Rate

Growing market

★★★★★ (3) Rate

Developing their own battery

★★★★★ (3) Rate

Sustainability trends

★★★★★ (3) Rate

Public support.

As environmental issues are a big concern, society as a whole supports electric engines.

★★★★★ (3) Rate

Threats

High end expertise of competitors.

Even though the competitors do not have a huge expertise at electric cars they do have a lot of money to invest as well as a brand well stablished.

★★★★★ (3) Rate

Lawsuits

★★★★★ (3) Rate

Reputation of Tesla depending on

the impulsive behaviours of Musk

★★★★★ (3) Rate

Complain about the products

★★★★ (3) Rate

Lack of regulations

★★★★ (3) Rate

SWOT ANALYSIS

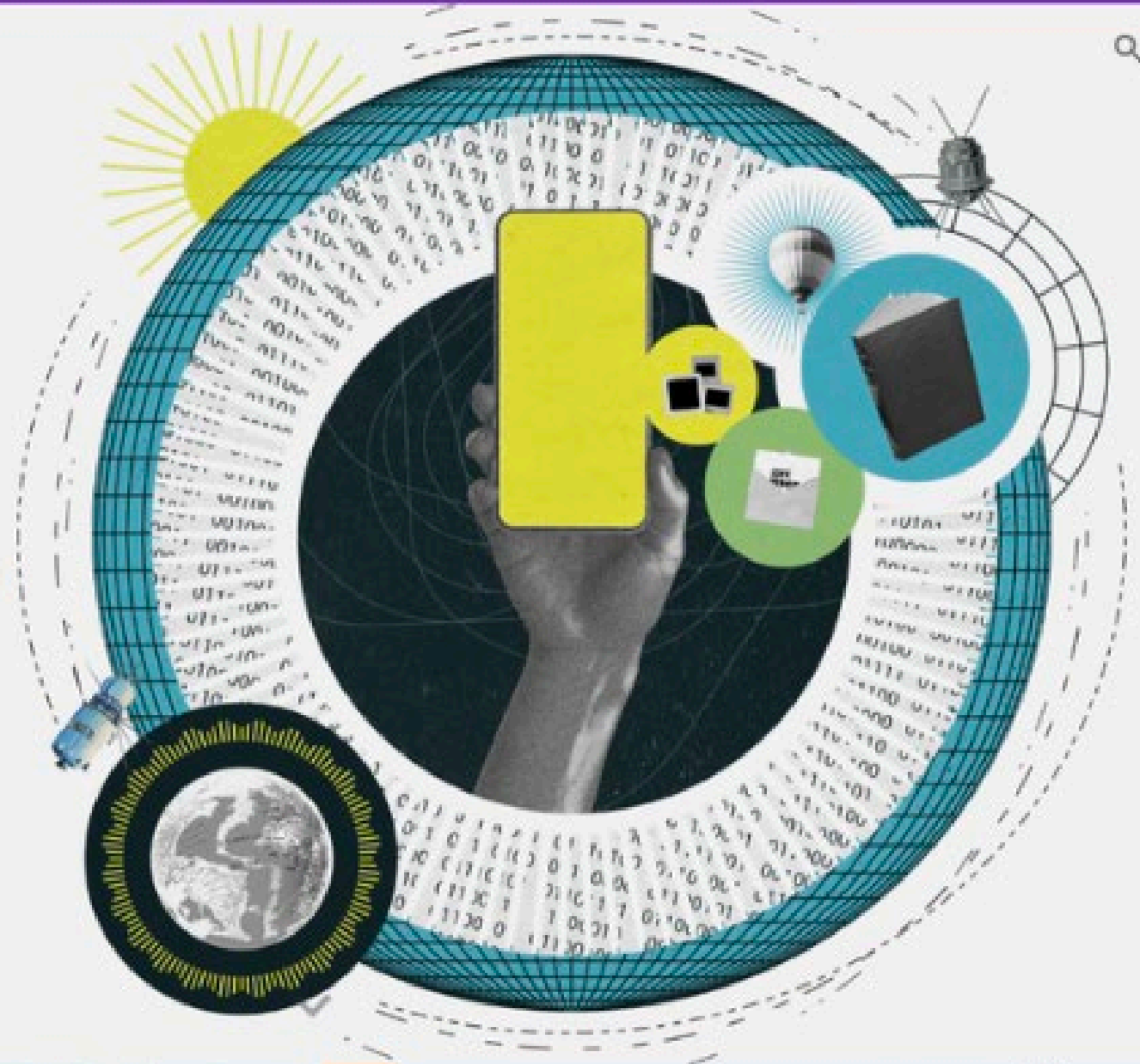


'tools such as Padlet made
the lesson really enjoyable'

student module survey feedback

Mood board

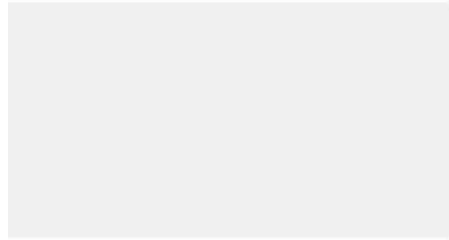
get
user



'e-portfolio was a different way of showing our business idea. Different from a Word document, it allowed us to make the idea more realistic, by adding photos and even videos of our products'

student module survey feedback

(0 replies so far)



forget to bring



Accessibility



☐ (always?)



Upcoming events



[Class Rep Information Session](#)

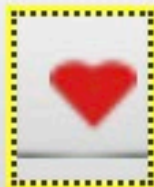


cct

College Dublin

Computing • IT • Business

ATbar



Home

CCT.ie

What helped?



Just
do it!

Extra Info:

- Ahead, HIVE Assistive Technology Platform. <https://www.ahead.ie/The-AT-Hive>
- CCT Guide to E-Portfolio (<https://bit.ly/3Rd3BJW>); Online Teaching (<https://bit.ly/3PaCGMV>); Universal Design (<https://bit.ly/3uteltM>); Assessment Design and Academic Integrity (<https://bit.ly/3otm4od>)
- Flynn S. & Lowney R. (2020) Pedagogy First Approach to Blended Teaching. https://arc.cct.ie/guest_lecture/5/
- Garrison, D.R., Anderson T. and Archer W. (2000) Critical inquiry a text-based environment. The Internet and Higher Education 2(2-3) 87-105
- Padlet Tips from Padlet: <https://padlet.com/gallery/tips>
- QQI (2020) Blended Learning Seminar II: Assessment in a Blended Learning Environment. <https://youtu.be/T8YX8d7XH34>