



UCD Pilot Research Assessment Project

Liam Cleere and Dr Roy Ferguson, University College Dublin

**QQI Inaugural Enhancement Seminar
2015**

Quality Review?.....looking forward to it!!!!



Research assessment?.....are you serious.....!!!!





Hello.....can you help me with.....





About UCD

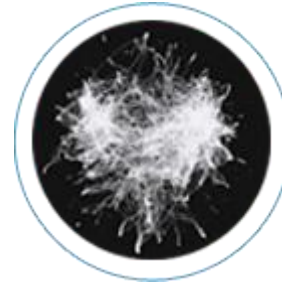
- Ireland largest university
 - over 1,300 faculty and 30,000 students
- €430m annual turnover
- National leader in research funding
 - €100m annual research income
- 139th in QS World University Ranking 2014/15
- Ireland's Global University
 - home to over 6,000 international students from 124 countries and delivers degrees to over 5,000 students on overseas campuses



Research priorities



Agri-Food



Data Science



Energy and Environment



Health



Culture, Economy and Society



International research excellence

Top 50 in world - 2	Veterinary Science (40)	
	Development Studies (45)	
Top in Ireland - 12	Veterinary Science	Development Studies
	Architecture/Built Environment	Business & Management
	Law	Engineering -Chemical
	Engineering – Civil & Structural	Earth & Marine Science
	Agriculture & Forestry	Materials Science
	Statistics & Operational Research	Mathematics
Top 100 in world – 9	English Language & Literature	History
	Modern Languages	Agriculture & Forestry
	Veterinary Science	Geography & Area Studies
	Development Studies	Law
	Politics & International Studies	

Source: QS Subject Rankings 2015



Context for pilot

- **University's Strategy 2015-2020**
 - Increase the quality, quantity and impact of our research, scholarship and innovation
 - Provide an educational experience that defines international best practice
 - Consolidate and strengthen our disciplines



Research Quality Assessment Pilot

- Assessment of the quality and level of research activity in the school benchmarked internationally
- Provide an overview of how research relates to T&L and the student experience within the discipline
- Make recommendations to strengthen the discipline
- Inform strategic planning



The Process – Outline

- School Statement
- Individual Staff submissions (4 research outputs)
– Jan 2010-Dec 2014
- Case Study/Studies
- Peer Panel Assessment – site visit 14-15 October
- Panel Report - December

Research Assessment Panel





Panel Externs

- Professor Chris Gerrard – University of Durham
- Professor dr. Corinne Hofman – University of Leiden
- Professor Robert Van de Noort – University of Reading
- Professor Alun Jones – UCD Chair



Overall Quality Profile –Proposed Levels

- Four - Quality that is world-leading in terms of originality, significance & rigour
- Three - Quality that is internationally excellent in terms of originality, significance and rigour but which falls short of the highest standards of excellence
- Two - Quality that is recognised internationally in terms of originality, significance and rigour
- One - Quality that is recognised nationally in terms of originality, significance and rigour
- **Unclassified** - Quality that falls below standard of nationally recognised work. Or work which does not meet the published definition of research for the purposes of this assessment



Criteria

- **Environment** - (i) vitality (ii) sustainability
- **Output** - (i) originality (ii) significance
(iii) rigour
- **Impact** – (i) reach (ii) significance



Panel Report

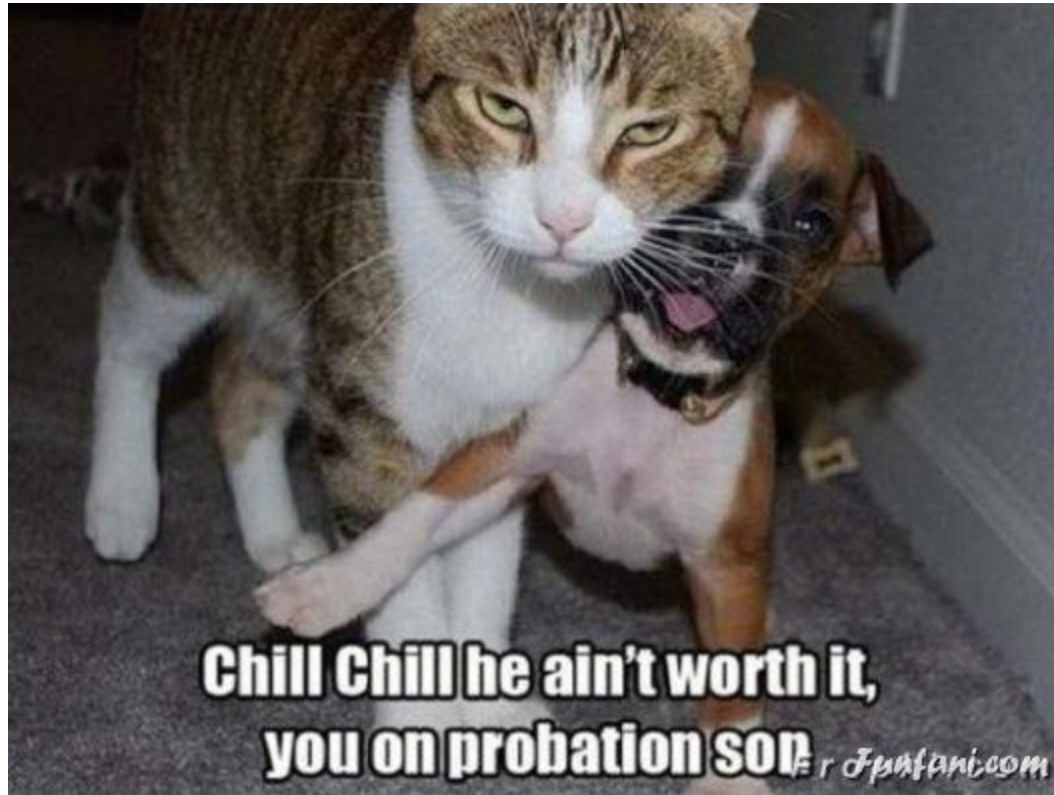
- Descriptive statement of the overall quality of research activity in the School
- Comment on the totality of research activity and performance in the context of the research environment
- Award an overall quality profile score to the School
- Make recommendations for improvement
- Provide feedback on the pilot research assessment process

Transparent process - No surprises.....





Collegial process.....not confrontational





Forming the overall quality profile

In forming the overall profile, the panel will assess three sub-elements:

- Environment (15%)
- Outputs (65%)
- Impact (20%)



Research Statement Report

- **Environment**

- Staff FTE & Headcount
- Research Income €
- Contextual narrative on strategy, organisation, infrastructure, funding, collaboration

- **Outputs**

- 4 publications per staff
- Benchmarking outputs against peer institutions (incl. citation analysis)
- Research PhD numbers

- **Impacts**

- Narrative on context for impact
- Impact case studies



Collection of Outputs

- 4 per person (2010 -2014) using template
- Outputs can be:
 - Publications: [including books, book chapters, special issues; journals, monographs, conference papers, policy evaluation reports, critical review articles etc.]
 - Products: [this may include - physical artefacts, digital artefacts, research datasets, software etc.]
 - Patents
- Make outputs available online (where possible)
 - Institutional Repository
 - Online Journal etc.



Output Collection Template

Research Quality Review: Output Template

Members of staff must supply four selected research outputs. The four outputs should be work published during the period of review, 1 January 2010 to 31 December 2014.

NOTE: You can submit multiple responses and edit those responses. If you enter more than four responses the most recently entered four responses will be used.

Your username (liam.cleere@ucd.ie) will be recorded when you submit this form. Not [liam.cleere](#)? [Sign out](#)

* Required

Output title *

Enter the title of the publication or output

Output Type *

Volume Title (e.g. Periodical etc.)

Year *

Where is the output located? Specify DOI, Hyperlink etc *

What makes this item significant? (200 words maximum)



Output title [A Contextual Approach to the Emergence of Agriculture in Southwest ...](#)

Output type D - Journal article

Volume title Current Anthropology

Year 2013

DOI [10.1086/670679](#)

Output title [A Technological Fix for 'Dunbar's Dilemma'?](#)

Output type C - Chapter in book

Volume title Social Brain, Distributed Mind

Year 2010

DOI

Output title [A World Upturned: Commentary and Analysis of the Dialogue of ...](#)

Output type A - Authored book

Volume title

Year 2008

DOI

Output title [An archaeological signature of multi-level social systems: The ...](#)

Output type D - Journal article

Volume title Journal of Anthropological Archaeology

Year 2011

DOI [10.1016/j.jaa.2010.12.002](#)



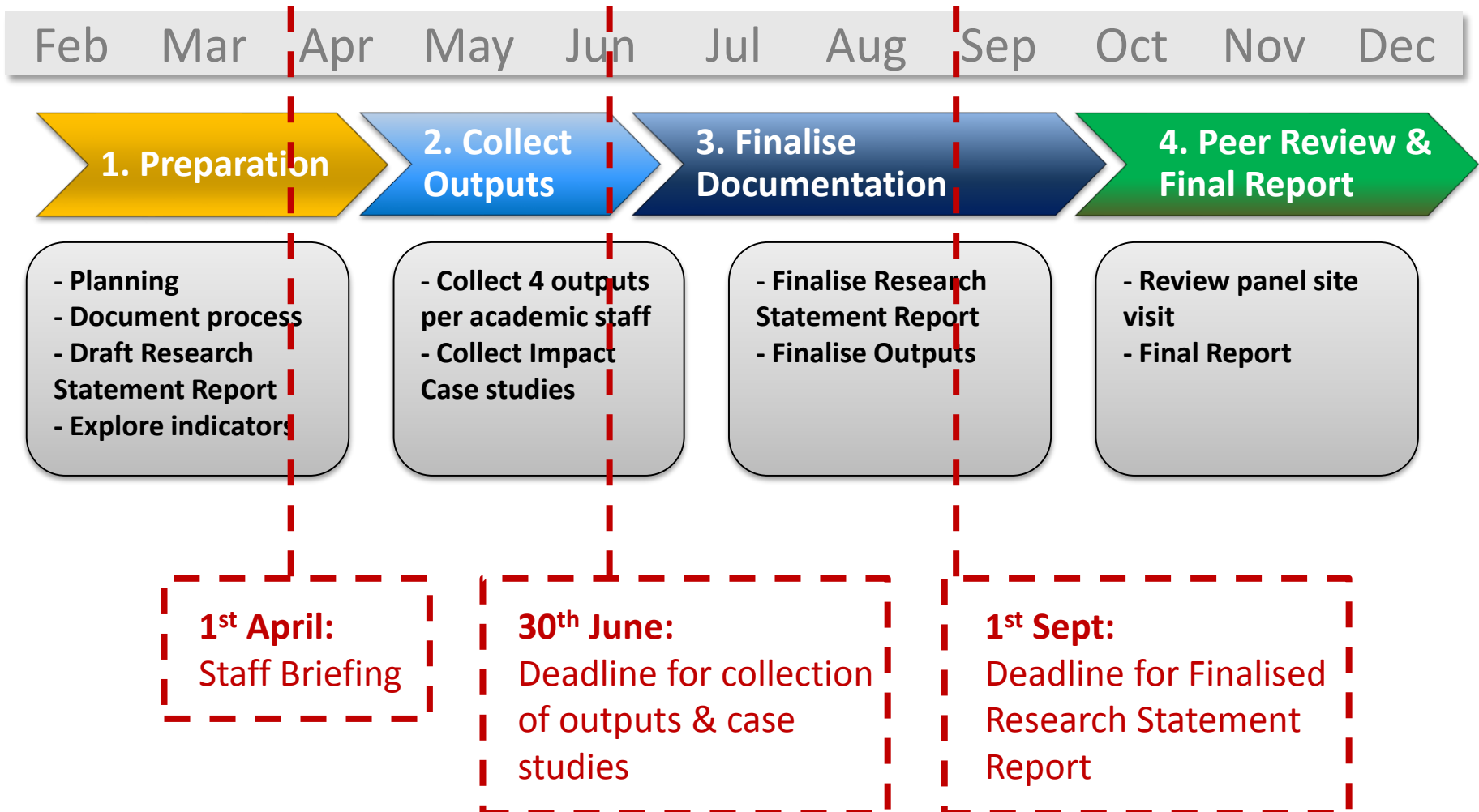
Case Study Template

- Title of case study
- Images
- Summary
- Research description
- Details of the impact
- References

Impact Case Study Template	
1	Name:
2	Title of case study:
3	Images: (Paste image files or insert links to images online)
4	Summary (Indicative Maximum 100 words) A summary should include a clear concise overview of the case study and avoid too much jargon or scientific language. The reader should be able to clearly see the main 2-5 impacts and get an indication of the significance and reach.
5	Research Description (Approx. 250 words) This section can introduce the researchers and provide an outline of the underpinning research. Key contextual information such as timeframe, body of research, research project or programme along with the significance of this research in relation to the impact can be included.
6	Details of the Impact (Approx. 250 words) This section provides the narrative explaining clearly the relationship between the research and the impacts mentioned in the summary. It explains the significance and contribution it made to the beneficiaries.
7	References to the Research In this section you can include references, web links, grant information, awards, reviews, peer review or other quality assurance processes



Timeline





The review process should not
be.....



Rather.....



SUCCESS

Because you too can own this face of pure accomplishment



DISCUSSION