

A vibrant rainbow arches across a clear blue sky above a modern university campus. The foreground features a paved plaza with several tall, slender white pillars. In the background, there are bare trees and a large, modern building with a glass facade. The scene is captured during the day, with the sun low in the sky, creating a soft glow.

Enabling Creative and Entrepreneurial Mindsets

**By the Innovation Academy, UCD
Suzi Jarvis and Colman Farrell**

Do we already have what we need?



Higher education is often glacial in implementing change!
https://www.youtube.com/watch?v=SADPuUYF_4I

Higher Education - Emerging Global Issues

Quality and relevance
of student experience

Pursuing higher
gain or higher
good

Differentiating
short-term trends
from fundamental
societal shifts

Competition for
top staff

Accommodating
increasing
demand

Ubiquitous access to
knowledge
undermining
content focused
curriculum

Meeting the needs
of aging populations

Sustainable
funding model

Wider challenge....



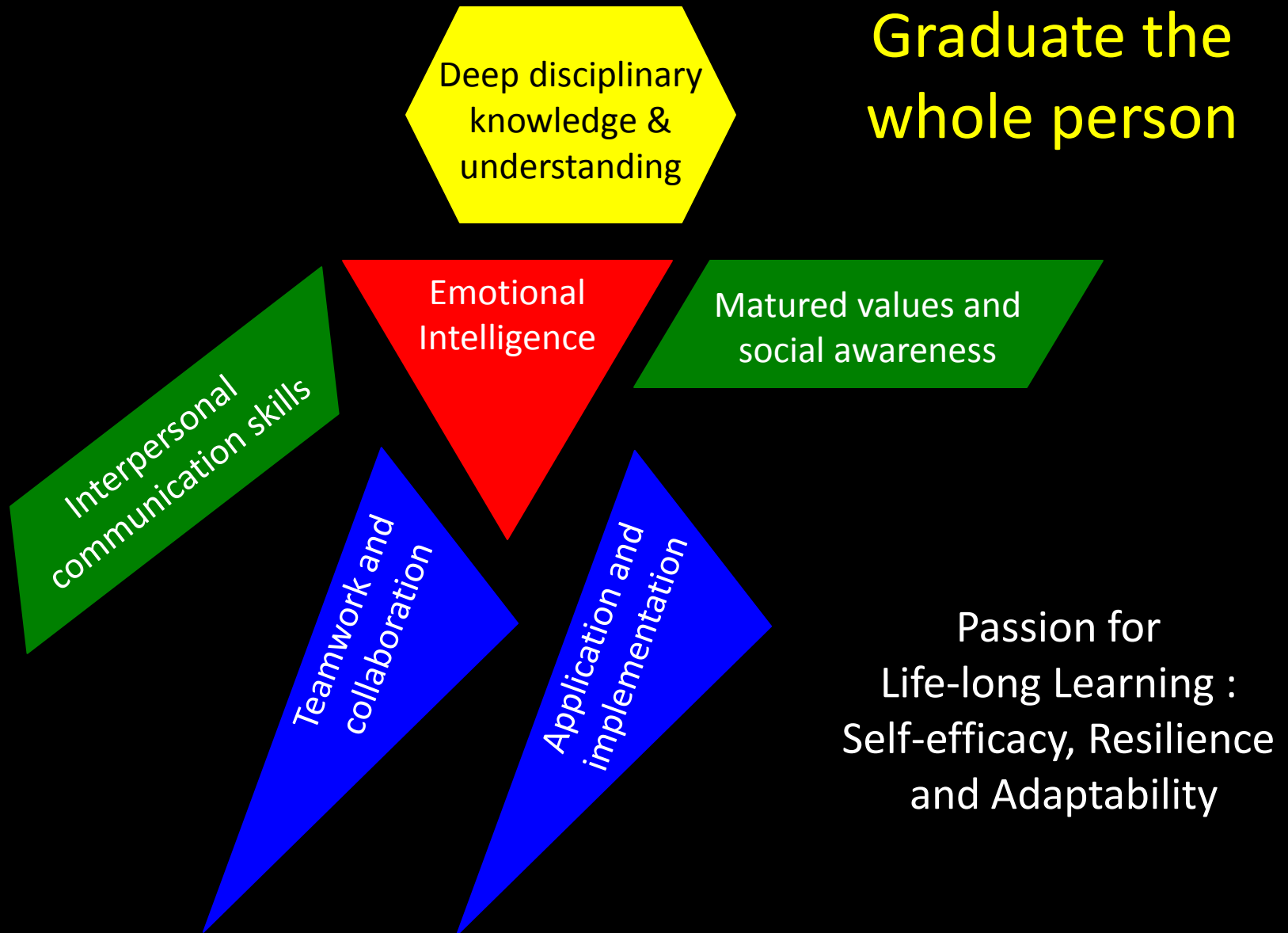
Rising
disengagement

Only 13% of employees
claim to be engaged in
the workplace



Meeting the challenge of 'engagement'...

**Graduate the
whole person**



What is entrepreneurship?

...an individual's ability to turn ideas into action. It includes creativity, innovation and risk taking, as well as the ability to plan and manage projects in order to achieve objectives.

2008 EC Report – Entrepreneurship in higher education

What makes someone entrepreneurial?

.... intuitive decision-making, capacity to make things happen autonomously, networking, initiative taking, opportunity identification, creative problem-solving, strategic thinking, self-efficacy and ability to cope with ambiguity.

National Centre for Entrepreneurship in Education,

Can we recognise entrepreneurial people?
Who can you think of?

We Recognise Outstanding Individuals Who 'Have It' But How Do You Teach It...?

Flexibility

Creativity

Calculated risk
taking

Self-efficacy

Ability to cope with
ambiguity

Resilience

How does it feel to act entrepreneurially?

Take one piece of paper and pen

With two neighbours, draw a story
between you, without communicating
verbally.

Example?

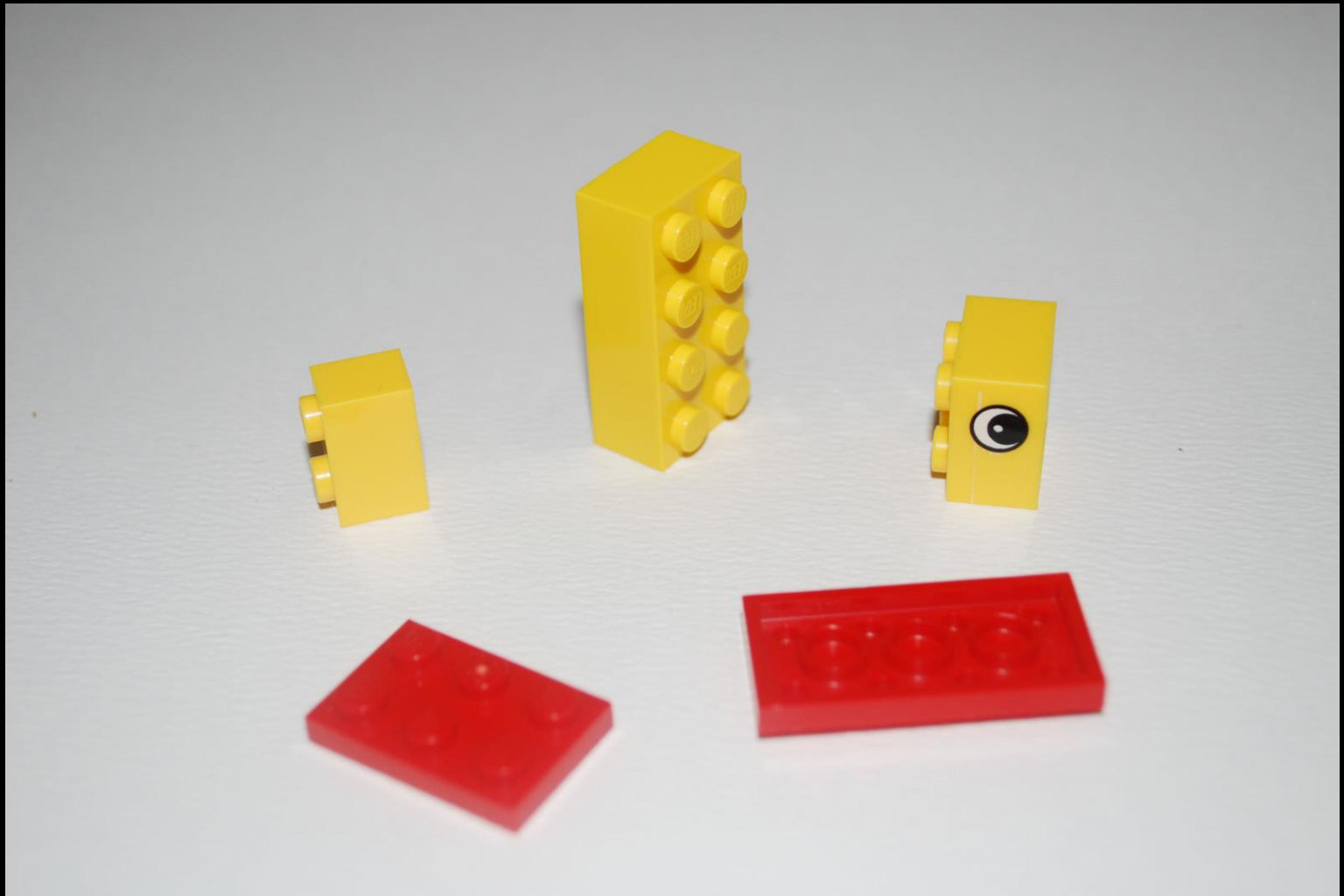
How did it feel?

How did it feel?

- Have to 'just start' – take action
- Have to deal with ambiguity and change
- The 'destination' is uncertain – structure emerges over time
- Have to work as a team – members making unpredictable and unplanned contributions

What are the barriers
to entrepreneurial thinking?

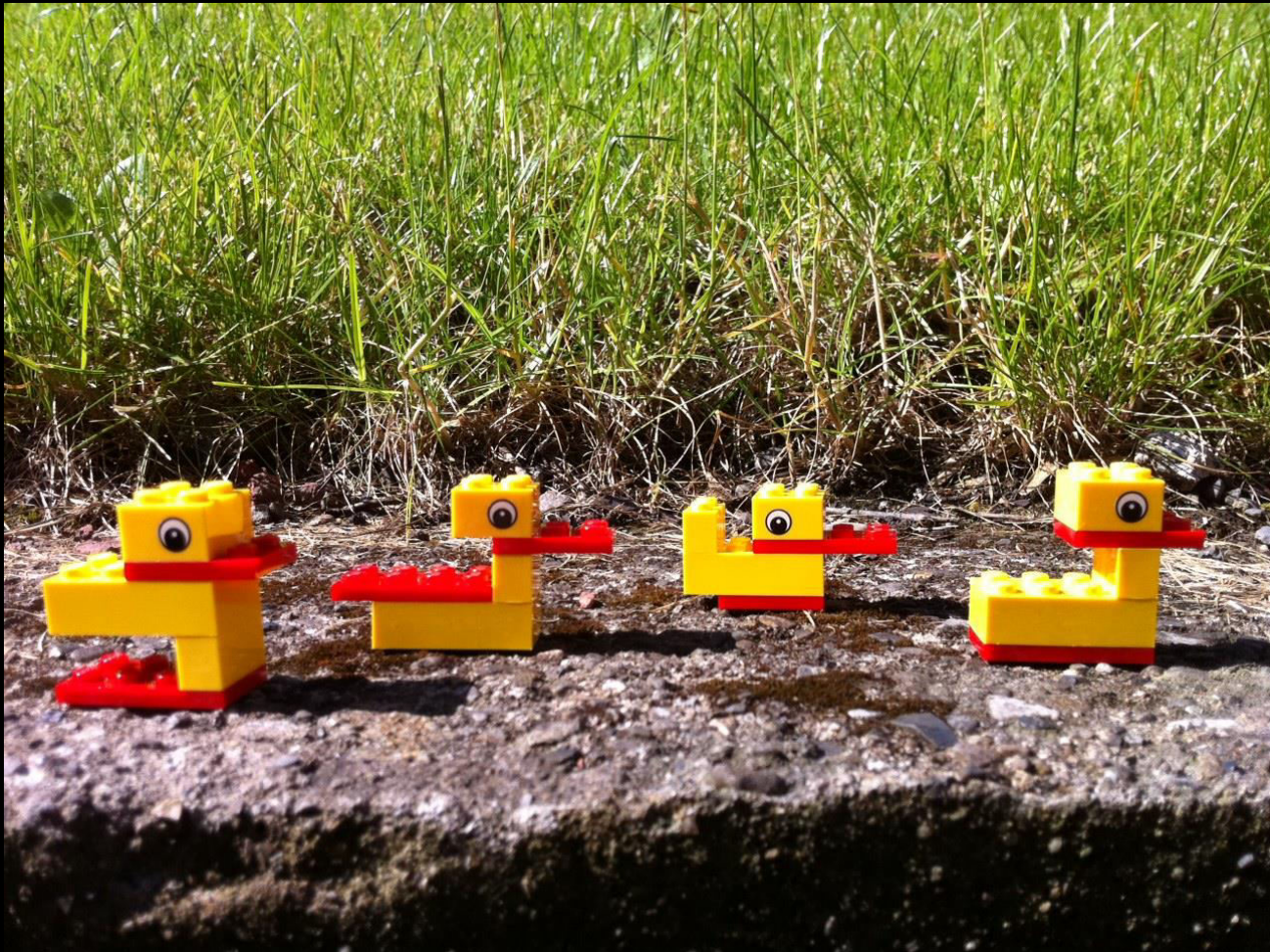
Take your bits....



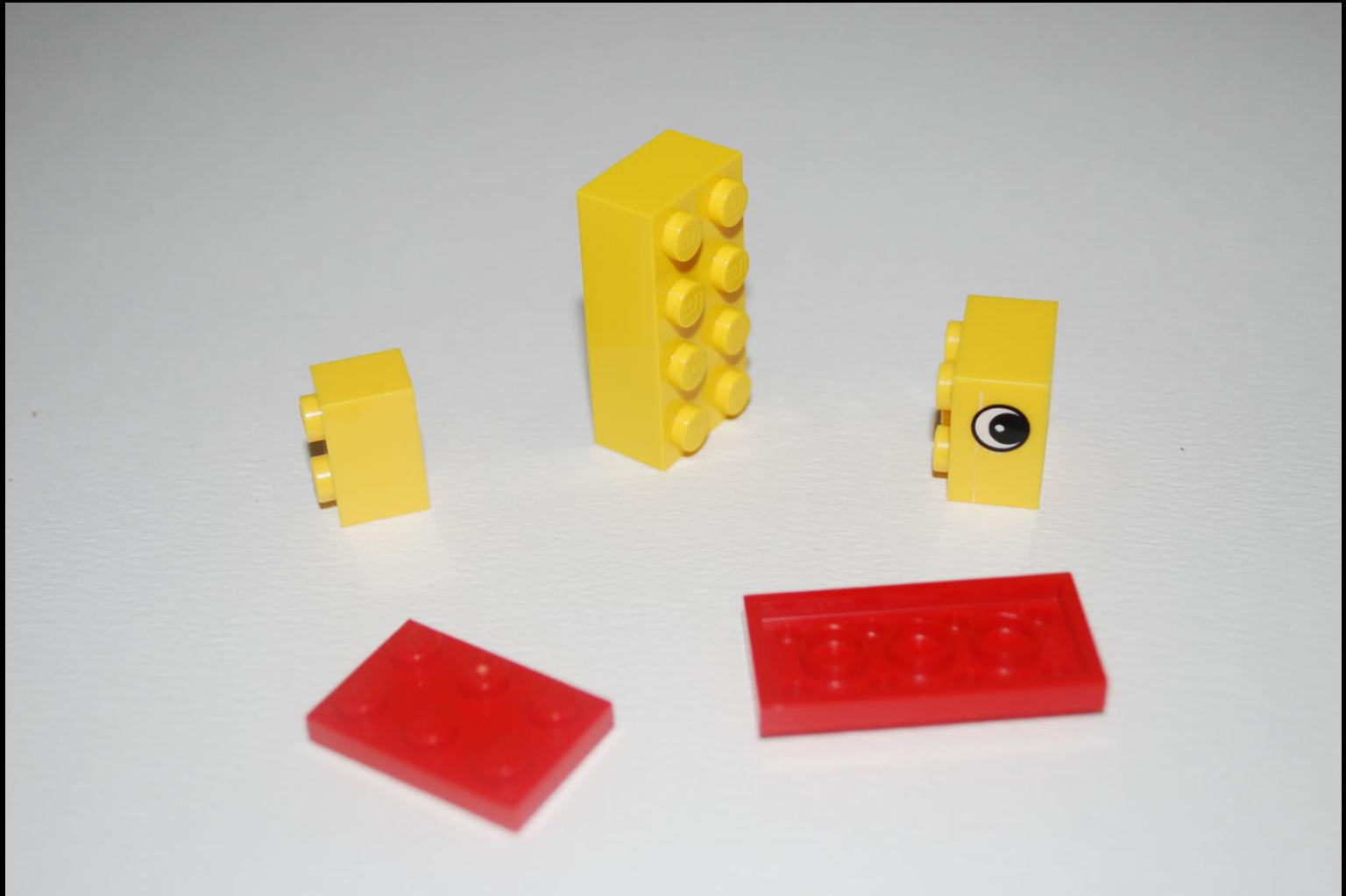


1 minute... tick, tick, tick..

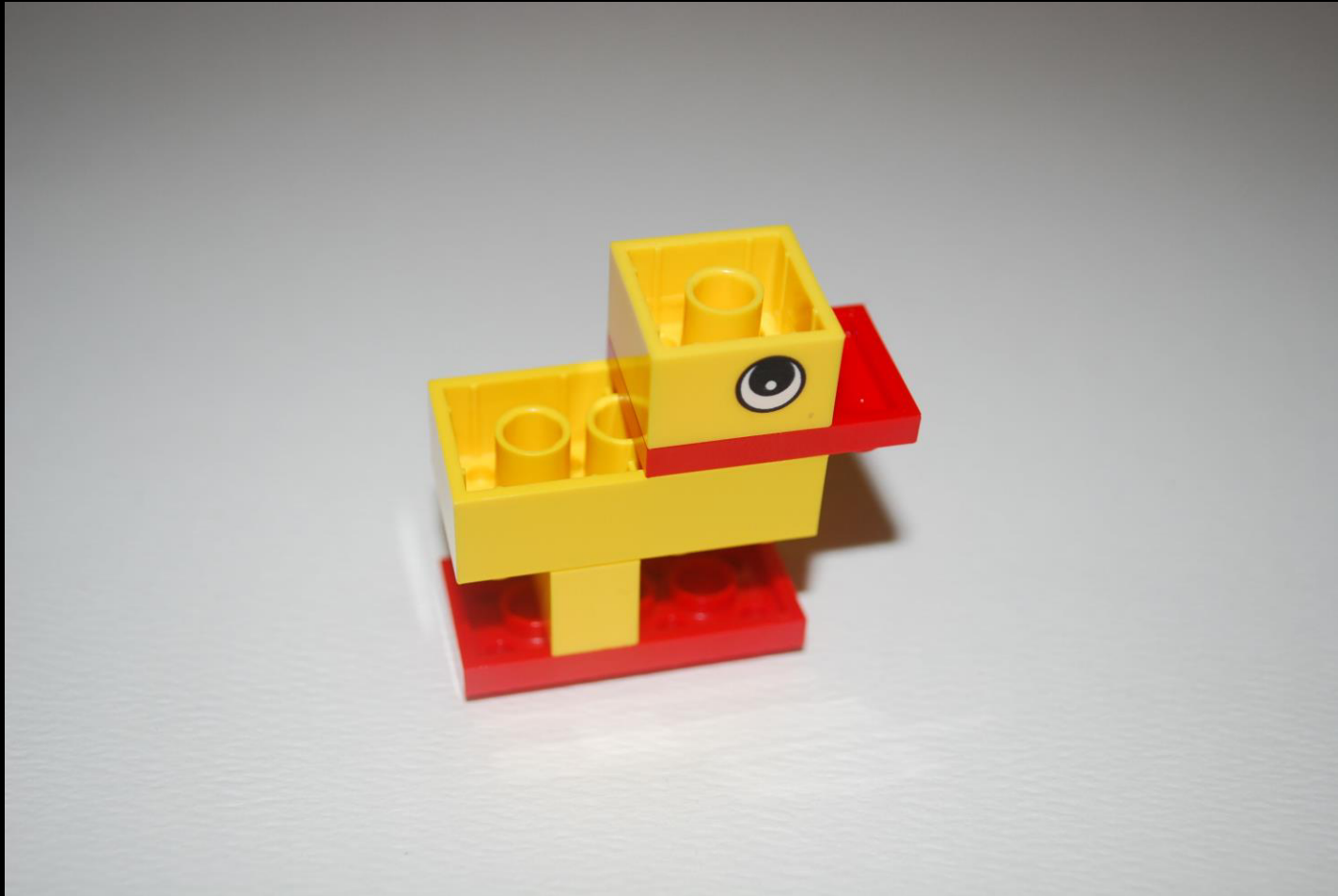
Any neighbouring ducks the same?



Anyone hesitant to start?



Anyone do this?



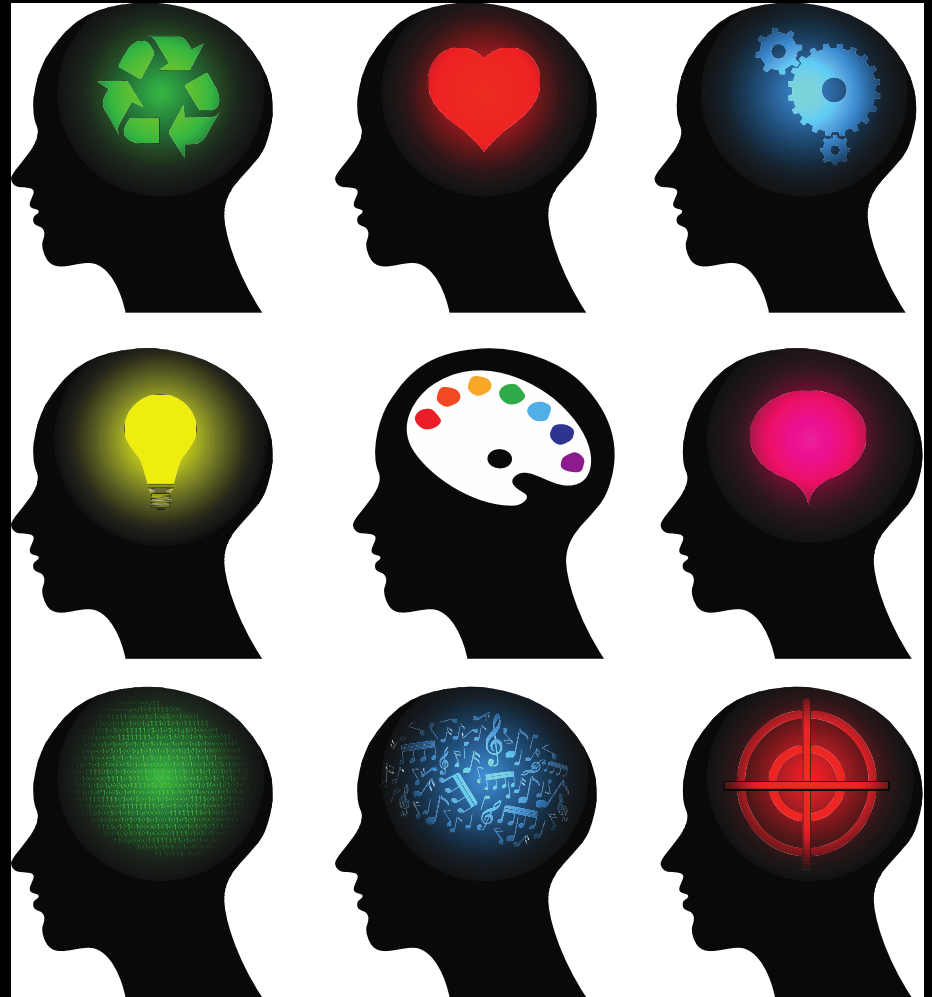
The Value of Diversity

No discipline should 'own'
innovation and
entrepreneurial
endeavour

Strive for multi-
disciplinarity

To derive value from
diversity

....**immersive**
and experiential



The Student Experience



<https://vimeo.com/126180450>

Unnecessary divergence in education?



Receive content
Study the experience of others

Think and act entrepreneurial
Practice intentional iteration




Discomfort zone for teachers?

Change in education – educators are the key



iO INNOVATION
ACADEMY
UCD

Why the Innovation Academy is starting to educate educators
<http://www.innovators.ie/educators/>

A woman with short blonde hair, wearing a blue blazer, stands in the foreground, facing a large, diverse group of people seated in a modern, multi-level atrium. The audience members are smiling and some are holding up red and green paper flags. The background shows a glass-enclosed upper level and a bright, open space with large windows.

"Overall, the Innovation Academy is an incredibly powerful program that has surpassed my expectations."

-Heidi Neck, Babson College, USA
Innovation Academy External Examiner

Innovation Academy

Open Invitation for Collaboration

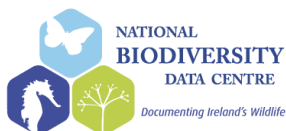


Thank You + Q&A



Innovation Academy Learning and Insights

- **Learning through doing** leads to understanding
- **'Real' work** – learning grounded in projects & real-world experiences where the results 'matter' - increases engagement
- **Team-based** approaches & building learning communities maintains the group beyond the end of the programme
- Staff facilitation improves more rapidly with **co-facilitation and real time student feedback**
- **Interpersonal environment matters more** than physical environment – trust, daring to fail, enjoyment and 'challenging fun'
- Work in Progress – Adaptable, flexible, dynamic (learning as we go)



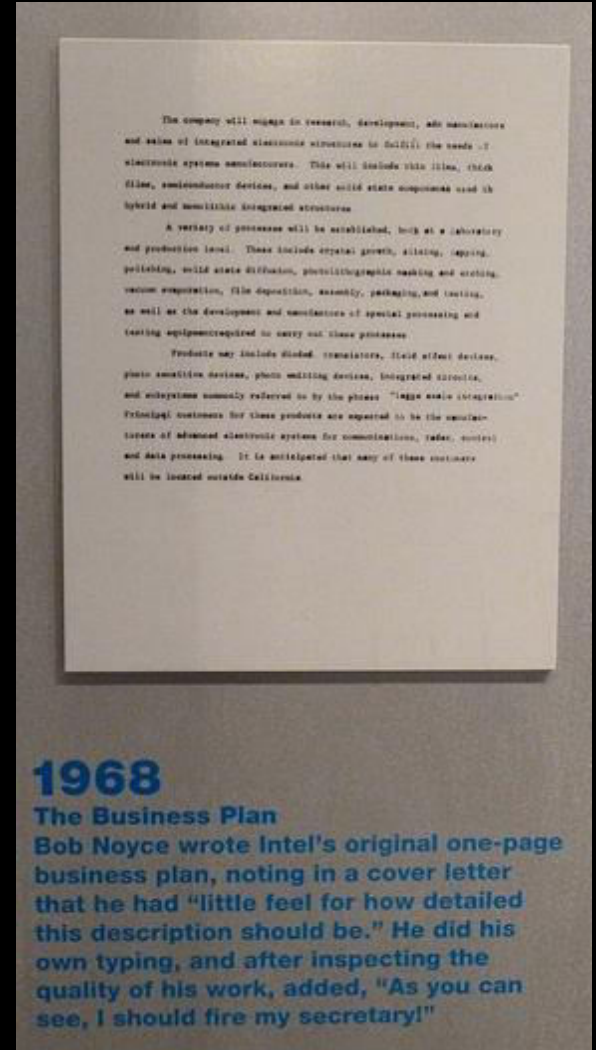
THE IRISH TIMES



You can't prepare students for the future by trying to duplicate what has happened in the past



The HP garage didn't have wifi!
No one gets \$2M for a 3 paragraph
business plan anymore.



THANK YOU

For More Info Please Visit

www.innovators.ie